

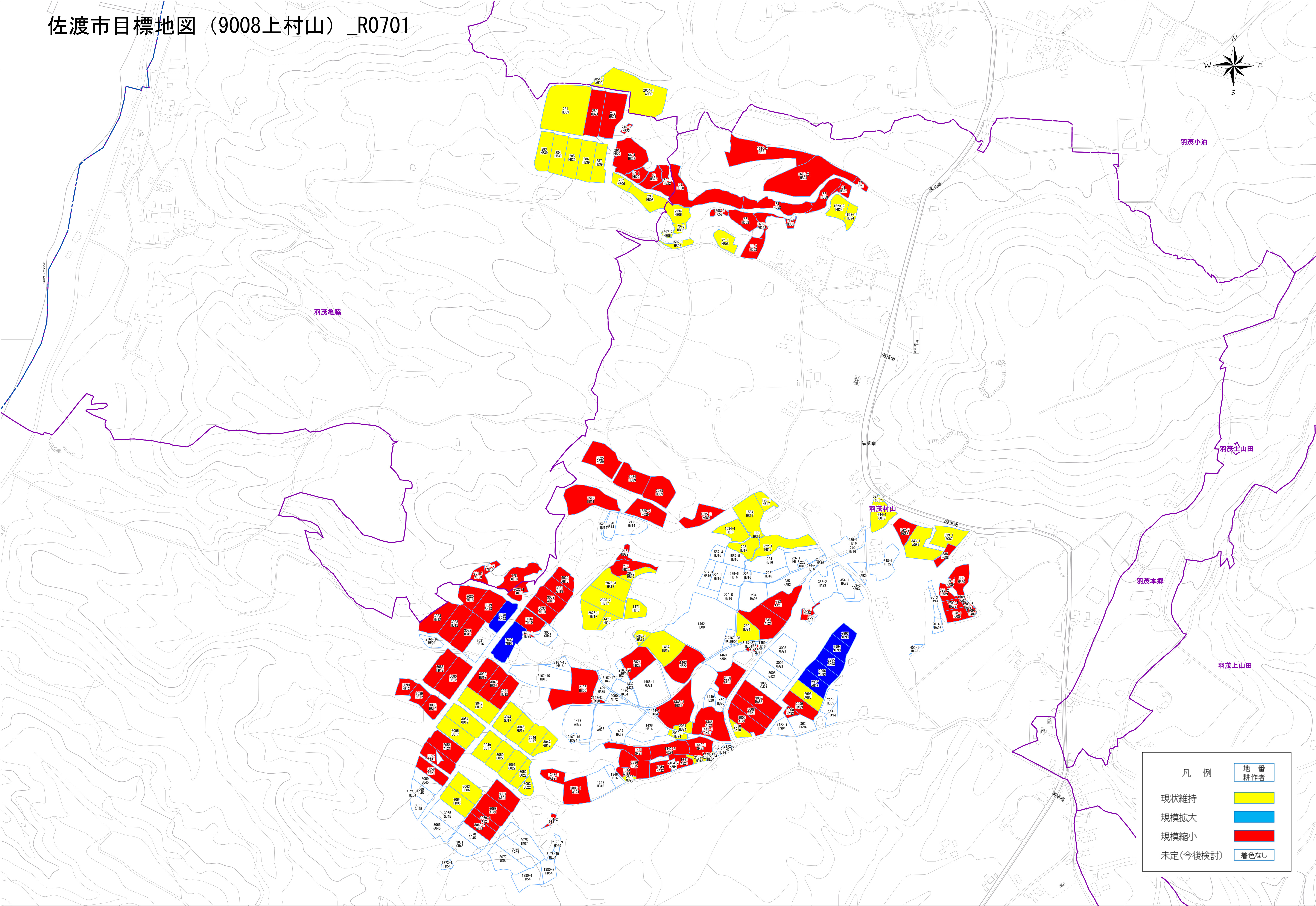
This topographic map of Sado City, Japan, displays land parcels with color-coded status and a legend. The map includes contour lines, a compass rose, and labels for various locations such as 羽茂小泊 (Hamo Koshu), 羽茂山田 (Hamo Yamada), 羽茂本郷 (Hamo Honcho), and 羽茂上山田 (Hamo Ueyamada). The legend, titled '凡例' (Legend), defines the color coding for land status: yellow for '現状維持' (Maintain Status), blue for '規模拡大' (Scale Expansion), red for '規模縮小' (Scale Reduction), and white for '未定(今後検討)' (Undecided (Future Consideration)). It also includes a box for '地番 耕作者' (Parcel Number, Cultivator) with a blue background.

佐渡市目標地図 (9008上村山) _R0701

凡例

- 現状維持
- 規模拡大
- 規模縮小
- 未定(今後検討)

地番 耕作者



This topographic map of Sado City, Japan, displays land parcels with color-coded status and a legend. The map includes contour lines, a compass rose, and labels for various locations such as 羽茂小泊 (Hamo Koshu), 羽茂山田 (Hamo Yamada), 羽茂本郷 (Hamo Honcho), and 羽茂上山田 (Hamo Ueyamada). The legend, titled '凡例' (Legend), defines the following categories:

- 地番 (Land Number): 地番 (Land Number)
- 耕作者 (Farmer): 耕作者 (Farmer)
- 現状維持 (Status Maintenance): 現状維持 (Status Maintenance)
- 規模拡大 (Scale Expansion): 規模拡大 (Scale Expansion)
- 規模縮小 (Scale Reduction): 規模縮小 (Scale Reduction)
- 未定(今後検討) (Undecided (Future Consideration)): 未定(今後検討) (Undecided (Future Consideration))
- 着色なし (No Coloring): 着色なし (No Coloring)

The map shows a large area of land with various colored parcels. The colors used are yellow, blue, red, and white. The yellow parcels are scattered throughout the map, while the blue parcels are concentrated in the lower right. The red parcels are scattered throughout the map, and the white parcels are scattered throughout the map. The map also shows a network of roads and a river.

This topographic map of Sado City, Japan, displays land parcels with color-coded status and a legend. The map includes contour lines, a compass rose, and labels for various locations such as 羽茂小泊 (Hamo Koshu), 羽茂山田 (Hamo Yamada), 羽茂本郷 (Hamo Honcho), and 羽茂上山田 (Hamo Ueyamada). The legend, titled '凡例' (Legend), defines the color coding for land status: yellow for '現状維持' (Maintain Status), blue for '規模拡大' (Scale Expansion), red for '規模縮小' (Scale Reduction), and white for '未定(今後検討)' (Undecided (Future Consideration)). It also includes a box for '地番 耕作者' (Parcel Number, Cultivator) with a blue background.

佐渡市目標地図 (9008上村山) _R0701

凡例

- 現状維持
- 規模拡大
- 規模縮小
- 未定(今後検討)

地番 耕作者

This topographic map of Sado City, Japan, displays land parcels with color-coded status and a legend. The map includes contour lines, a compass rose, and labels for various locations such as 羽茂小泊 (Hamo Koshu), 羽茂山田 (Hamo Yamada), 羽茂本郷 (Hamo Honcho), and 羽茂上山田 (Hamo Ueyamada). The legend, titled '凡例' (Legend), defines the color coding for land status: yellow for '現状維持' (Maintain Status), blue for '規模拡大' (Scale Expansion), red for '規模縮小' (Scale Reduction), and white for '未定(今後検討)' (Undecided (Future Consideration)). It also includes a table for '地番' (Land Number) and '耕作者' (Farmer):

地番	耕作者
1432	ART2
1435	ART2
1437	HAB3
1438	HB16
1440	HAB4
1441	HAB4
1442	GJ21
1443	HAB3
1444	HAB4
1445	HAB3
1446	HAB3
1447	HAB3
1448	HAB3
1449	HAB3
1450	HAB3
1451	HAB3
1452	HAB3
1453	HAB3
1454	HAB3
1455	HAB3
1456	HAB3
1457	HAB3
1458	HAB3
1459	HAB3
1460	HAB3
1461	HAB3
1462	HAB3
1463	HAB3
1464	HAB3
1465	HAB3
1466	HAB3
1467	HAB3
1468	HAB3
1469	HAB3
1470	HAB3
1471	HAB3
1472	HAB3
1473	HAB3
1474	HAB3
1475	HAB3
1476	HAB3
1477	HAB3
1478	HAB3
1479	HAB3
1480	HAB3
1481	HAB3
1482	HAB3
1483	HAB3
1484	HAB3
1485	HAB3
1486	HAB3
1487	HAB3
1488	HAB3
1489	HAB3
1490	HAB3
1491	HAB3
1492	HAB3
1493	HAB3
1494	HAB3
1495	HAB3
1496	HAB3
1497	HAB3
1498	HAB3
1499	HAB3
1500	HAB3
1501	HAB3
1502	HAB3
1503	HAB3
1504	HAB3
1505	HAB3
1506	HAB3
1507	HAB3
1508	HAB3
1509	HAB3
1510	HAB3
1511	HAB3
1512	HAB3
1513	HAB3
1514	HAB3
1515	HAB3
1516	HAB3
1517	HAB3
1518	HAB3
1519	HAB3
1520	HAB3
1521	HAB3
1522	HAB3
1523	HAB3
1524	HAB3
1525	HAB3
1526	HAB3
1527	HAB3
1528	HAB3
1529	HAB3
1530	HAB3
1531	HAB3
1532	HAB3
1533	HAB3
1534	HAB3
1535	HAB3
1536	HAB3
1537	HAB3
1538	HAB3
1539	HAB3
1540	HAB3
1541	HAB3
1542	HAB3
1543	HAB3
1544	HAB3
1545	HAB3
1546	HAB3
1547	HAB3
1548	HAB3
1549	HAB3
1550	HAB3
1551	HAB3
1552	HAB3
1553	HAB3
1554	HAB3
1555	HAB3
1556	HAB3
1557	HAB3
1558	HAB3
1559	HAB3
1560	HAB3
1561	HAB3
1562	HAB3
1563	HAB3
1564	HAB3
1565	HAB3
1566	HAB3
1567	HAB3
1568	HAB3
1569	HAB3
1570	HAB3
1571	HAB3
1572	HAB3
1573	HAB3
1574	HAB3
1575	HAB3
1576	HAB3
1577	HAB3
1578	HAB3
1579	HAB3
1580	HAB3
1581	HAB3
1582	HAB3
1583	HAB3
1584	HAB3
1585	HAB3
1586	HAB3
1587	HAB3
1588	HAB3
1589	HAB3
1590	HAB3
1591	HAB3
1592	HAB3
1593	HAB3
1594	HAB3
1595	HAB3
1596	HAB3
1597	HAB3
1598	HAB3
1599	HAB3
1600	HAB3
1601	HAB3
1602	HAB3
1603	HAB3
1604	HAB3
1605	HAB3
1606	HAB3
1607	HAB3
1608	HAB3
1609	HAB3
1610	HAB3
1611	HAB3
1612	HAB3
1613	HAB3
1614	HAB3
1615	HAB3
1616	HAB3
1617	HAB3
1618	HAB3
1619	HAB3
1620	HAB3
1621	HAB3
1622	HAB3
1623	HAB3
1624	HAB3
1625	HAB3
1626	HAB3
1627	H

This topographic map of Sado City, Japan, displays land parcels with color-coded status and a legend. The map includes contour lines, a compass rose, and labels for various locations such as 羽茂小泊 (Hamo Kobori), 羽茂山田 (Hamo Yamada), 羽茂本郷 (Hamo Honcho), and 羽茂上山田 (Hamo Ueyamada). The legend, titled '凡例' (Legend), defines the color coding for land status: 現状維持 (Current Status) in yellow, 規模拡大 (Scale Expansion) in blue, 規模縮小 (Scale Reduction) in red, and 未定(今後検討) (Undecided/Future Consideration) in white. It also includes a section for '地番' (Land Number) and '耕作者' (Farmer), with a note '着色なし' (No coloring) for the latter. The map shows numerous parcels, many of which are numbered, indicating specific land parcels and their status.

佐渡市目標地図 (9008上村山)_R0701

凡例

- 現状維持
- 規模拡大
- 規模縮小
- 未定(今後検討)

地番
耕作者

着色なし